

# Entering a Stepfamily - Family Reconstitution in Sweden 1970 - 2000

## Jani Turunen

### Stepfamily Entry

New family forms under the Second Demographic Transition

Larger pool of children under risk of stepfamily formation due to SDT

Reason for stepfamily formation mainly divorce/separation under SDT

Social differences in probability of stepfamily formation?

### New Family Forms

Second Demographic Transition:

- Increasing rates of union dissolution and divorce
- Cohabitation
- Repartnering
- Non-marital fertility
- Multi-partnered fertility

= Increasing pool at risk for stepfamily formation

### Data: LNU 1991 & 2000

Swedish Level of Living Survey, 1991 and 2000

Random 1/1000 sample of the Swedish population aged 18-75

Including full union- and educational histories

Children of Swedish born respondents as unit of analysis

### Modeling and method

Discrete time event history analysis

Acquisition of stepparent as event variable

Robust standard errors in order to account for sibling clusters

Child considered under risk of stepfamily entry if born out of union, experienced dissolution of parental union or death of a parent

Censored at age 16 or at interview date

Sample has 1277 children in 785 family units

70,872 months of analysis

### Variables

Child's age at first exposure to risk

Duration of exposure (living with a single parent)

Parent's union history prior to the birth of child

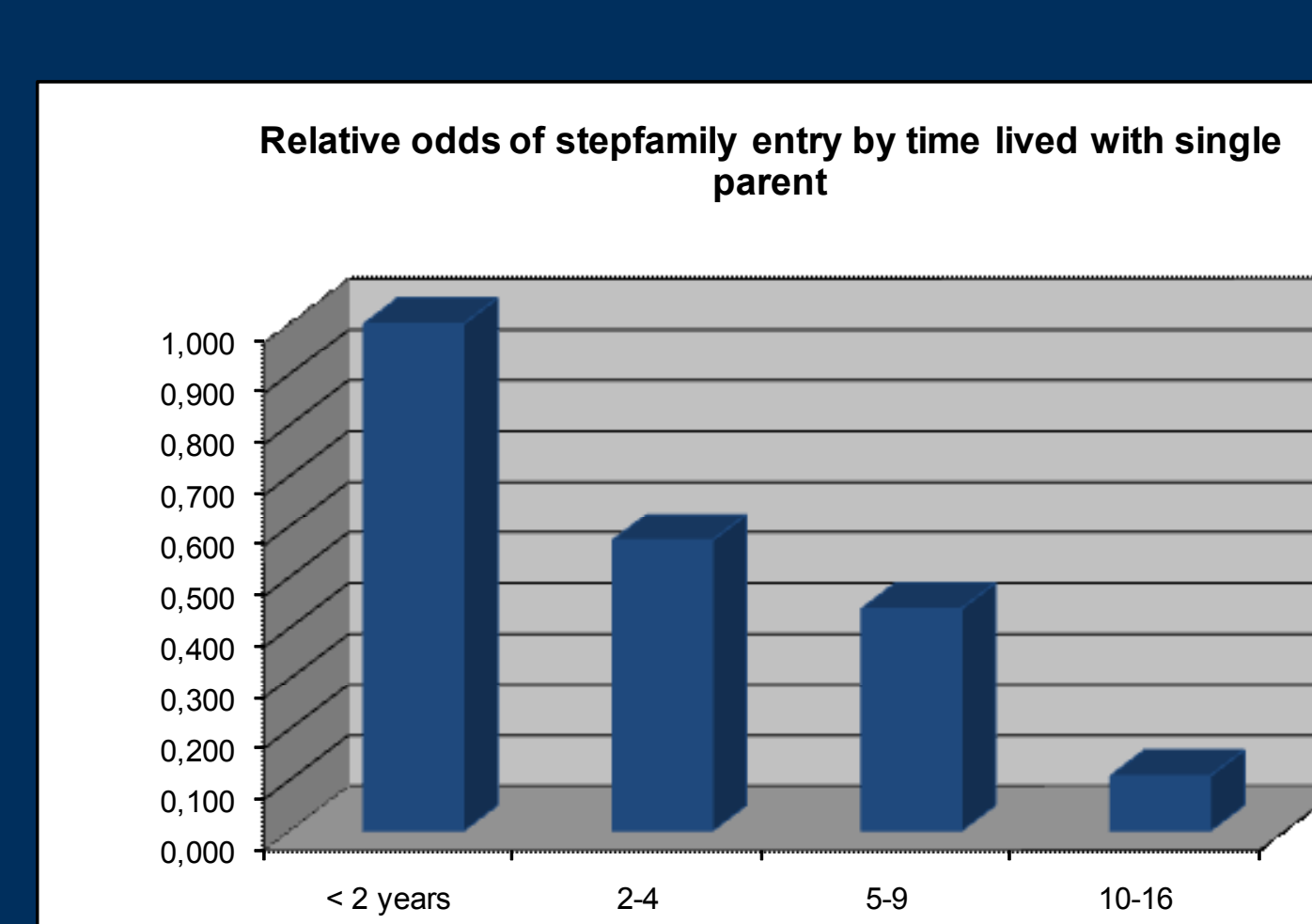
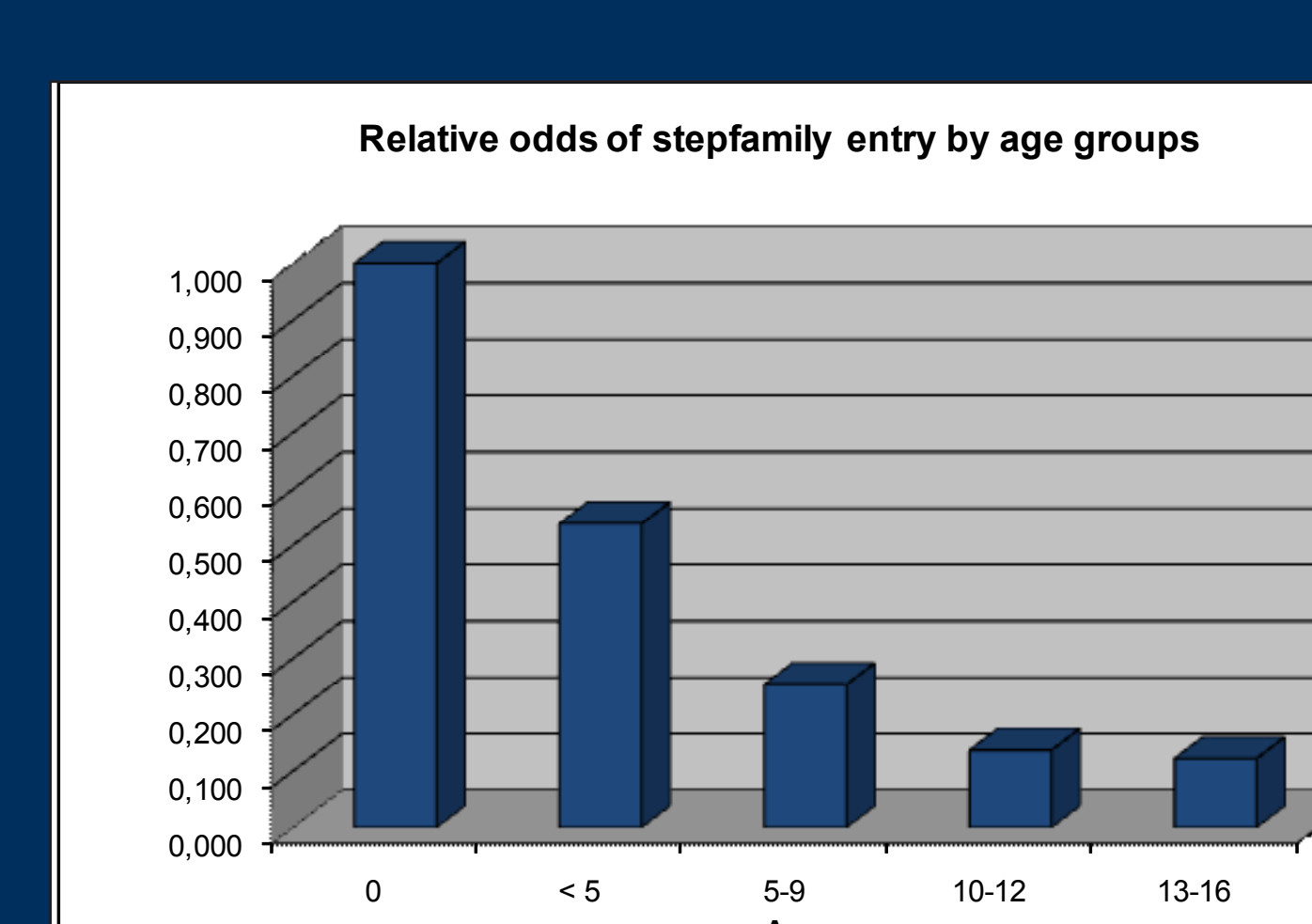
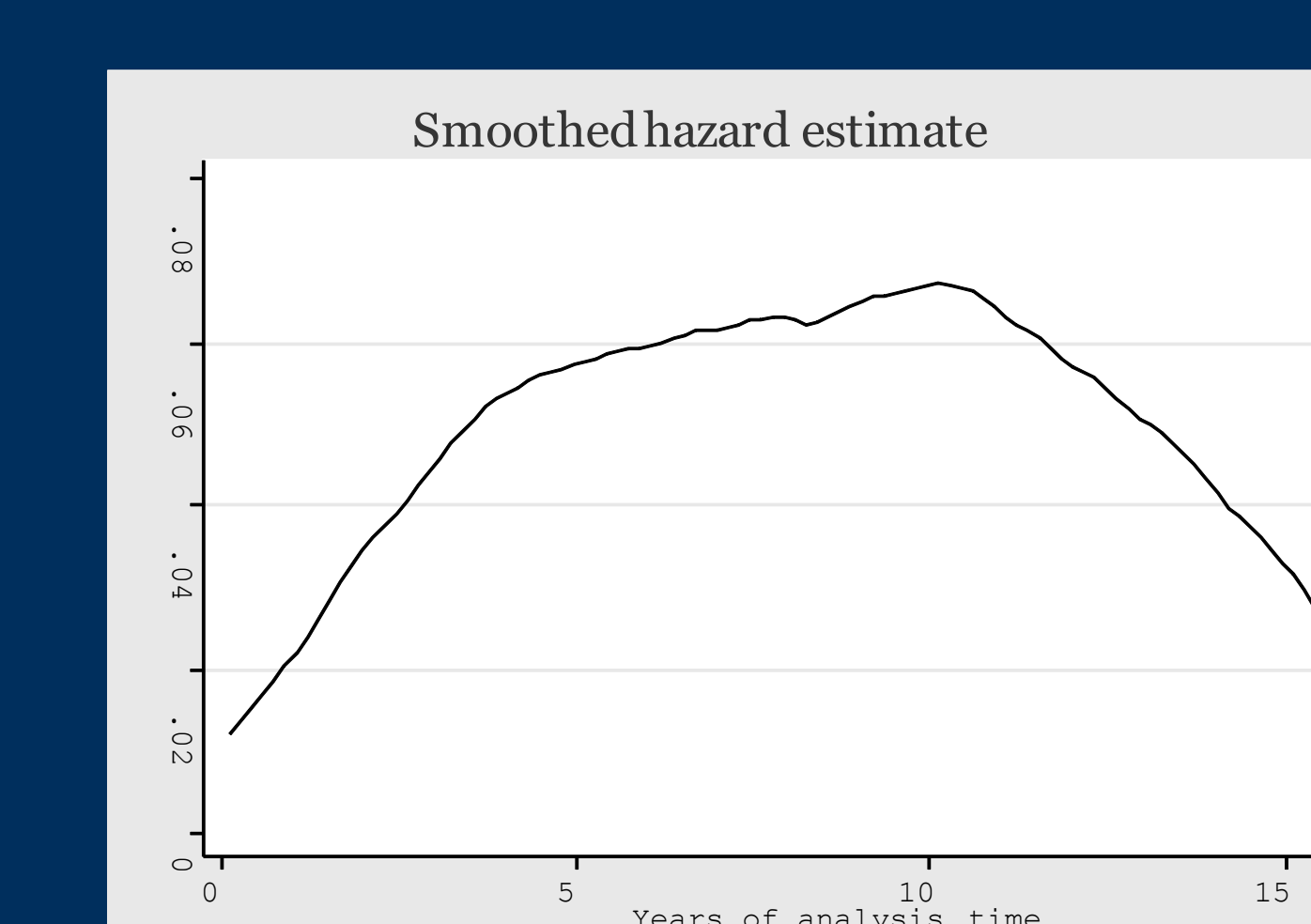
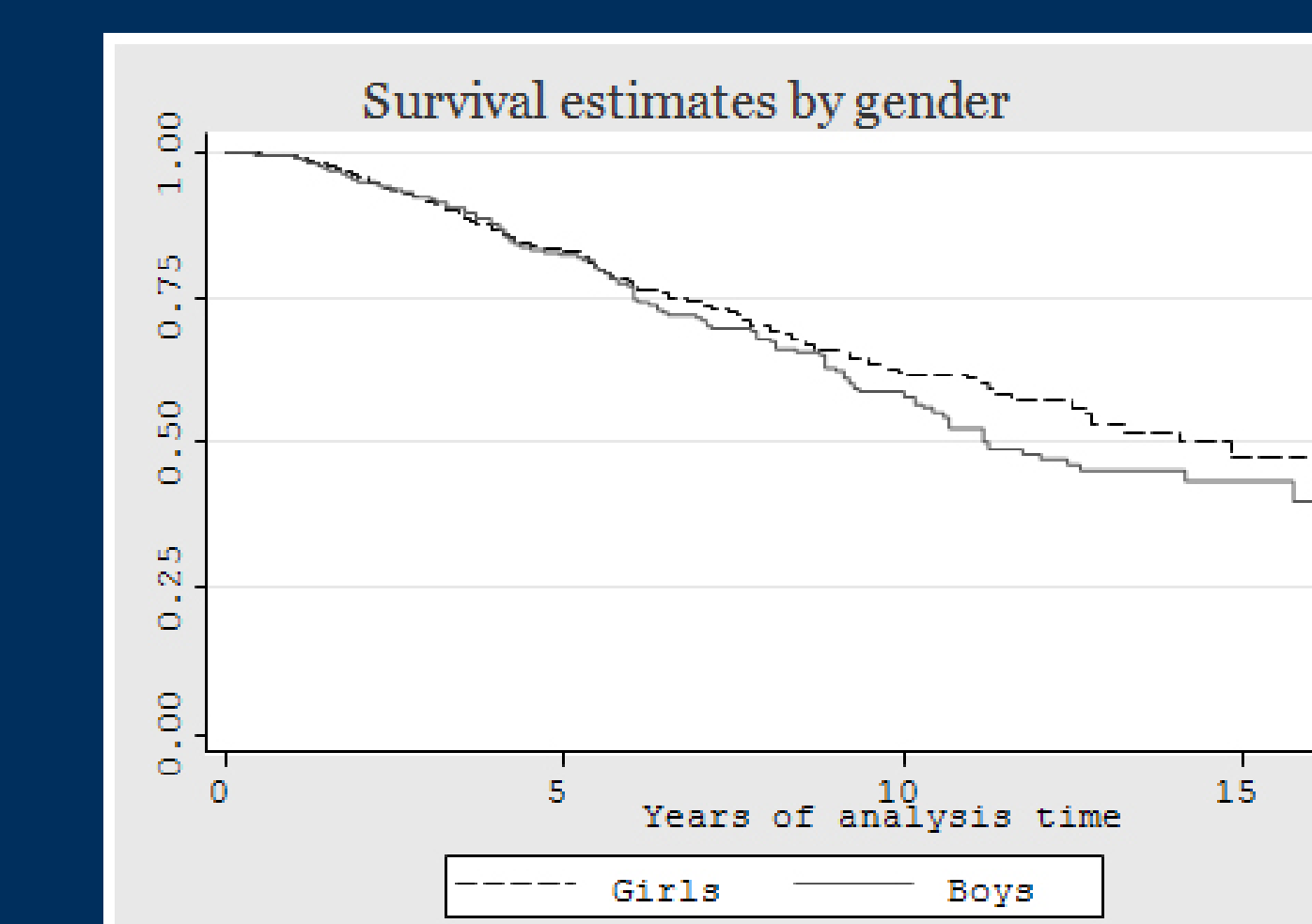
Gender of child

Number of siblings

Parents highest finished education

### Relative odds of stepfamily entry

	Odds ratio	P> z
<b>Child's age at first exposure to risk:</b>		
0	1	
< 5	0.54	0.034
5-9	0.25	0.000
10-12	0.14	0.000
13-16	0.12	0.000
<b>Duration:</b>		
< 2 years	1	
2-4	0.57	0.012
5-9	0.44	0.000
10-16	0.11	0.000
<b>No edu/7 year primary</b>	1	
9 year primary	0.87	0.732
Secondary	0.83	0.612
Some college	1.17	0.773
University	0.60	0.305
Education missing	0.70	0.433
<b>No siblings</b>	1	
1	1.37	0.142
2 or more	0.77	0.365
<b>Born in parent's first union</b>	1	
Parent has had prior unions	0.29	0.000
<b>Girl</b>	1	
Boy	0.68	0.026



### Conclusions

- No educational differences!
- More than half of children born to a single parent or experiencing parental separation enter a stepfamily by age 16.
- As expected, stepfamily entry declines with age and time.
- Stepfamily entry appears less likely if the